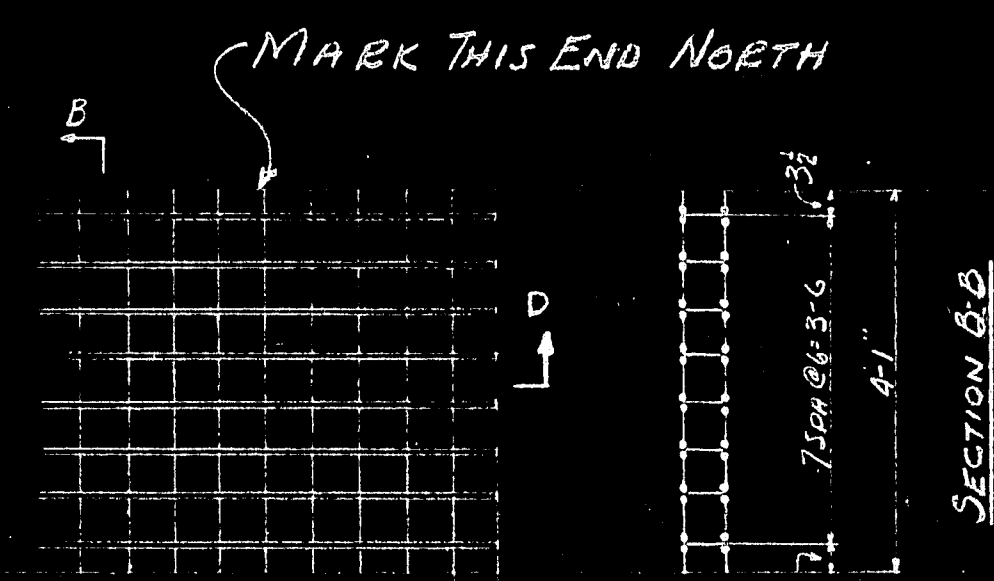
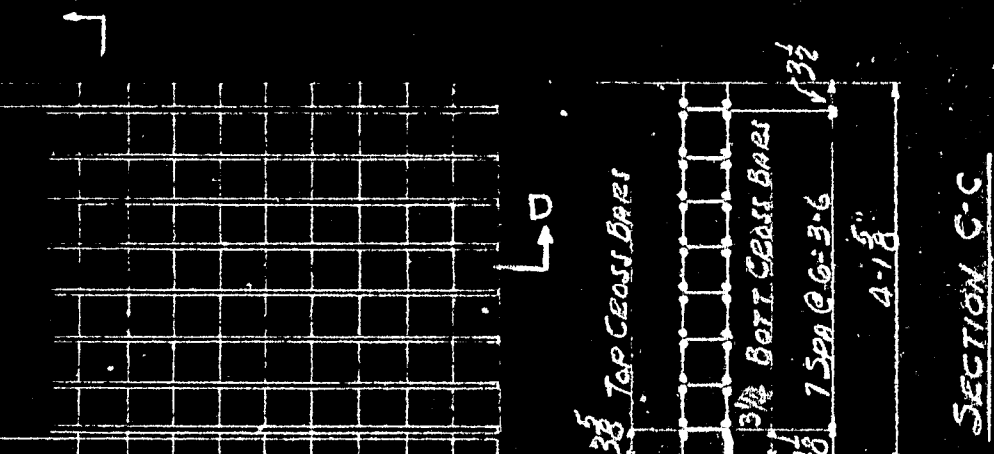


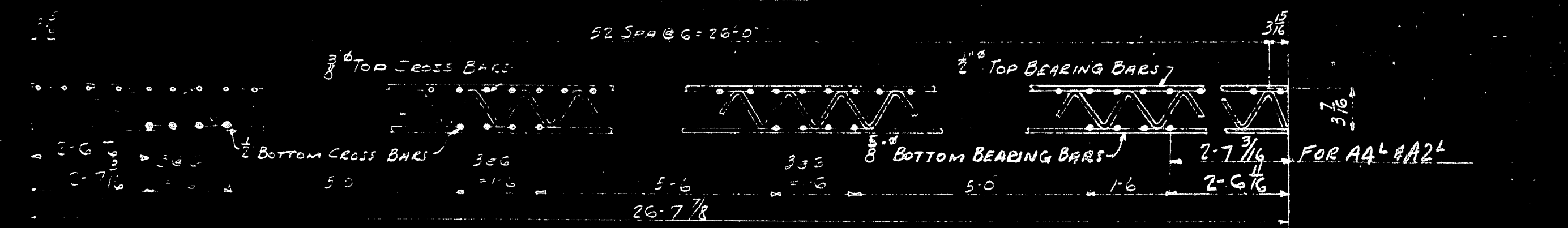
53 SPAN @ 26'-6"  
26'-7 1/2"  
1 PANEL - MK A1<sup>L</sup> AS SHOWN  
1 DO - MK A1<sup>R</sup> OPP. HAND



53 SPAN @ 26'-6"  
26'-7 1/2"  
1 PANEL - MK A2<sup>L</sup> AS SHOWN  
1 DO - MK A2<sup>R</sup> OPP. HAND



52 SPAN @ 26'-6"  
26'-7 1/2"  
1 PANEL - MK A3<sup>L</sup> AS SHOWN  
1 DO - MK A3<sup>R</sup> OPP. HAND



SECTION D-D

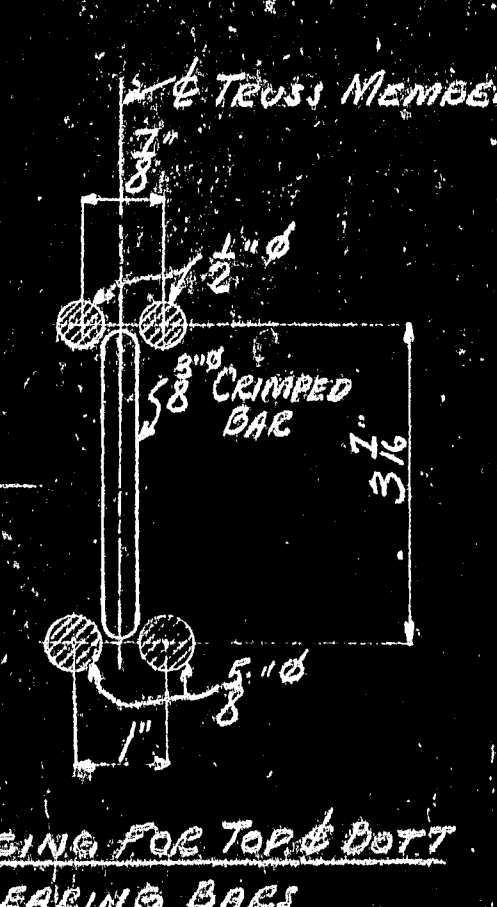
Bill of Material for Splice Bars

TYPE	NO. SPICE BARS PER JOINT	NUMBER OF JOINTS	TOTAL NUMBER OF SPICE BARS	SIZE OF BARS	TOTAL LENGTH
F	8	20	160	1/2" x 4'-0"	640'-0"
G	8	34	272	3/4" x 6'-0"	1632'-0"
J	1	24	24	1" x 4'-0"	24'-0"
K	1	42	42	1 1/2" x 4'-0"	63'-0"

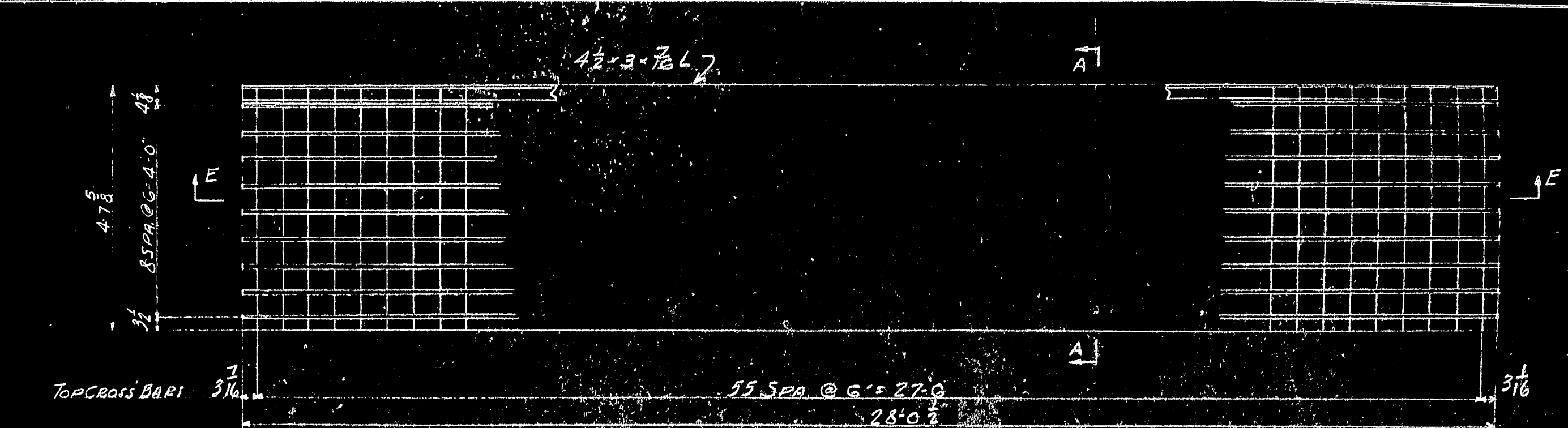
END ANGLE SPLICES

Bill of Material for Splice Bars

TYPE	NO. SPICE BARS PER JOINT	NUMBER OF JOINTS	TOTAL NUMBER OF SPICE BARS	SIZE OF BARS	TOTAL LENGTH
F	8	20	160	1/2" x 4'-0"	640'-0"
G	8	34	272	3/4" x 6'-0"	1632'-0"
J	1	24	24	1" x 4'-0"	24'-0"
K	1	42	42	1 1/2" x 4'-0"	63'-0"



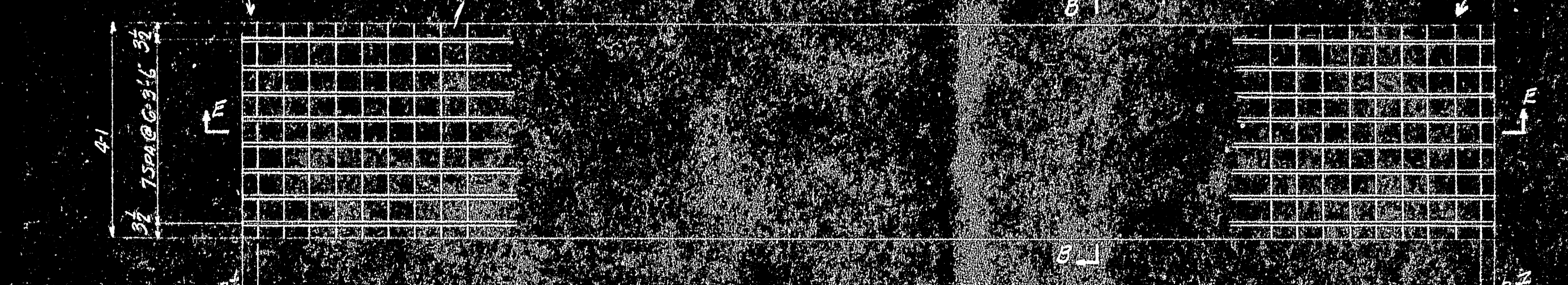
SPACING FOR TOP & BOTT. BEARING BARS



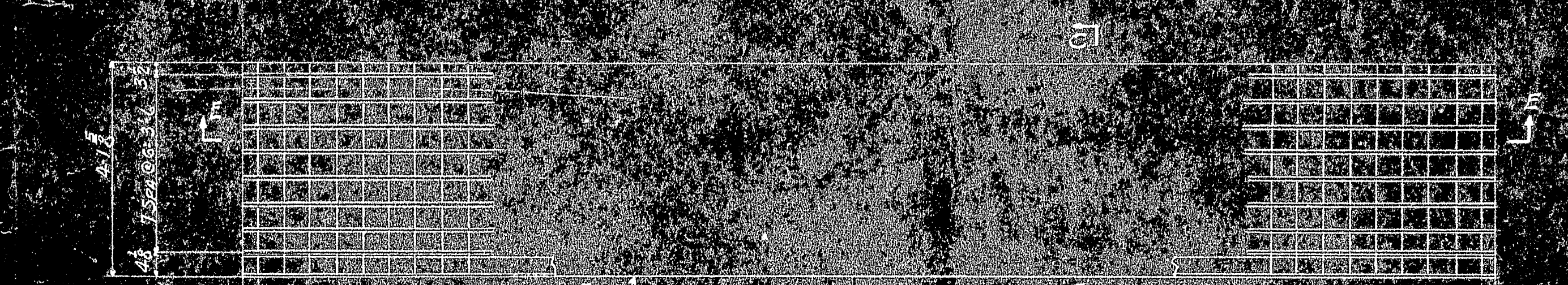
53 SPAN @ 26'-6"  
26'-7 1/2"  
15 PANELS - MK B1<sup>R</sup> AS SHOWN  
25 DO - MK B1<sup>L</sup> OPP. HAND

MARK PANEL B1 NORTH THIS END

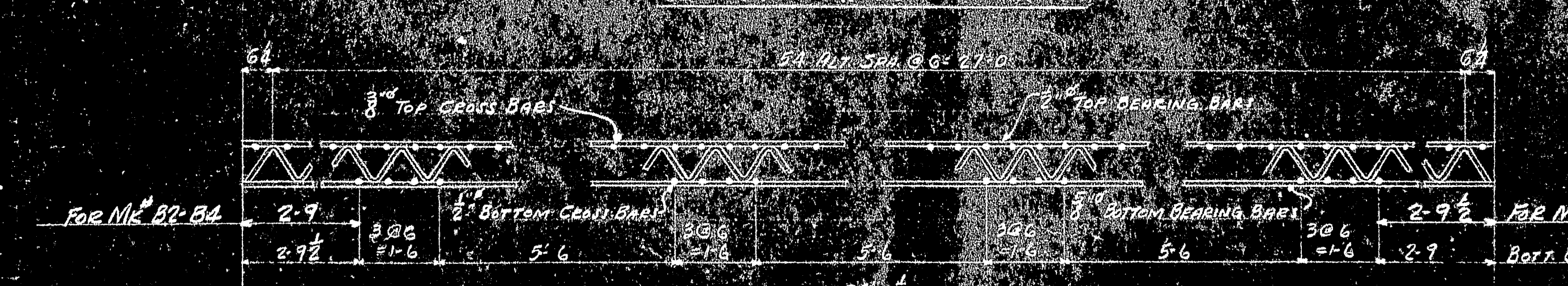
MARK PANEL B2 NORTH THIS END



52 SPAN @ 26'-6"  
26'-7 1/2"  
15 PANELS - MK B2  
25 DO - MK B2



52 SPAN @ 26'-6"  
26'-7 1/2"  
15 PANELS - MK B3<sup>L</sup> AS SHOWN  
25 DO - MK B3<sup>R</sup> OPP. HAND



SECTION D-D

NOTE:  
FOR FORM & SPACING SEE DWG 3031-8  
FOR ALL OTHER NOTES, SEE DWG 3031-1

CUSTOMER THE PHOENIX BRIDGE CO. PHOENIXVILLE, PA.		RELIANCE STEEL PRODUCTS COMPANY RANKIN, (PITTSBURGH DISTRICT) PA. BRIDGE DEPARTMENT	
PROJECT RWA PROJECT NE 1010 D		LOCATION DEPT. 1010 D SPANWICK BRIDGE - HANCOCK COUNTY, MD.	
CUSTOMER ORDER NO. 7/20/38	REFERENCE L.M. 518.38	APPROVED BY G.N.H. 528.38	DWG. NO. 3031-2
DATE 6/23/38	TRACED G.N.H.	CONTRACT NO. 73325	

